

Planning Assistance Program

—— Regional Growth ——
Committee



WASATCH FRONT REGIONAL COUNCIL
DAVIS | MORGAN | SALT LAKE | TOOELE | WEBER

Planning Assistance Program Rationale

- RGC asked us to explore this in March
- We receive periodic requests from cities to provide assistance
- Through WFRC, an assistance program might benefit from economies of scale

Benefits of a WFRC Planning Assistance Program

- A Planning Assistance program will **serve our members** in helping you meet your community development goals
- Planning and implementing centers is a way to **improve mobility and accessibility**



- Local governments would benefit from assistance in utilizing the WC2040 toolbox



How a Planning Assistance Program might be structured

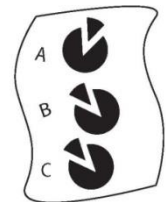
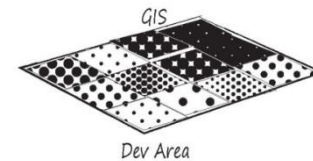
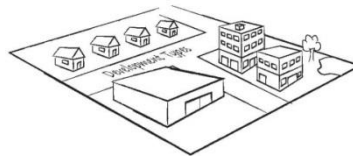
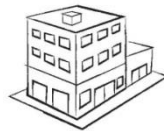
- Implemented as a Pilot program for 2014
- Funds used to help plan or implement development concepts that
 - Tie-in with regional transportation,
 - utilize WC2040 tools, or
 - improve mobility/ accessibility



How a Planning Assistance Program might be structured

- \$400,000 would enable the program to serve a number of communities
- Funded via uncommitted Surface Transportation Plan dollars

- Flexibly administered for the pilot, utilizing a mix of:
 - a. Cash grants
 - b. Consultants coordinated to serve more than one city at a time
 - c. WFRC staff assistance



Planning Assistance Program

—— Regional Growth ——
Committee



WASATCH FRONT REGIONAL COUNCIL
DAVIS | MORGAN | SALT LAKE | TOOELE | WEBER