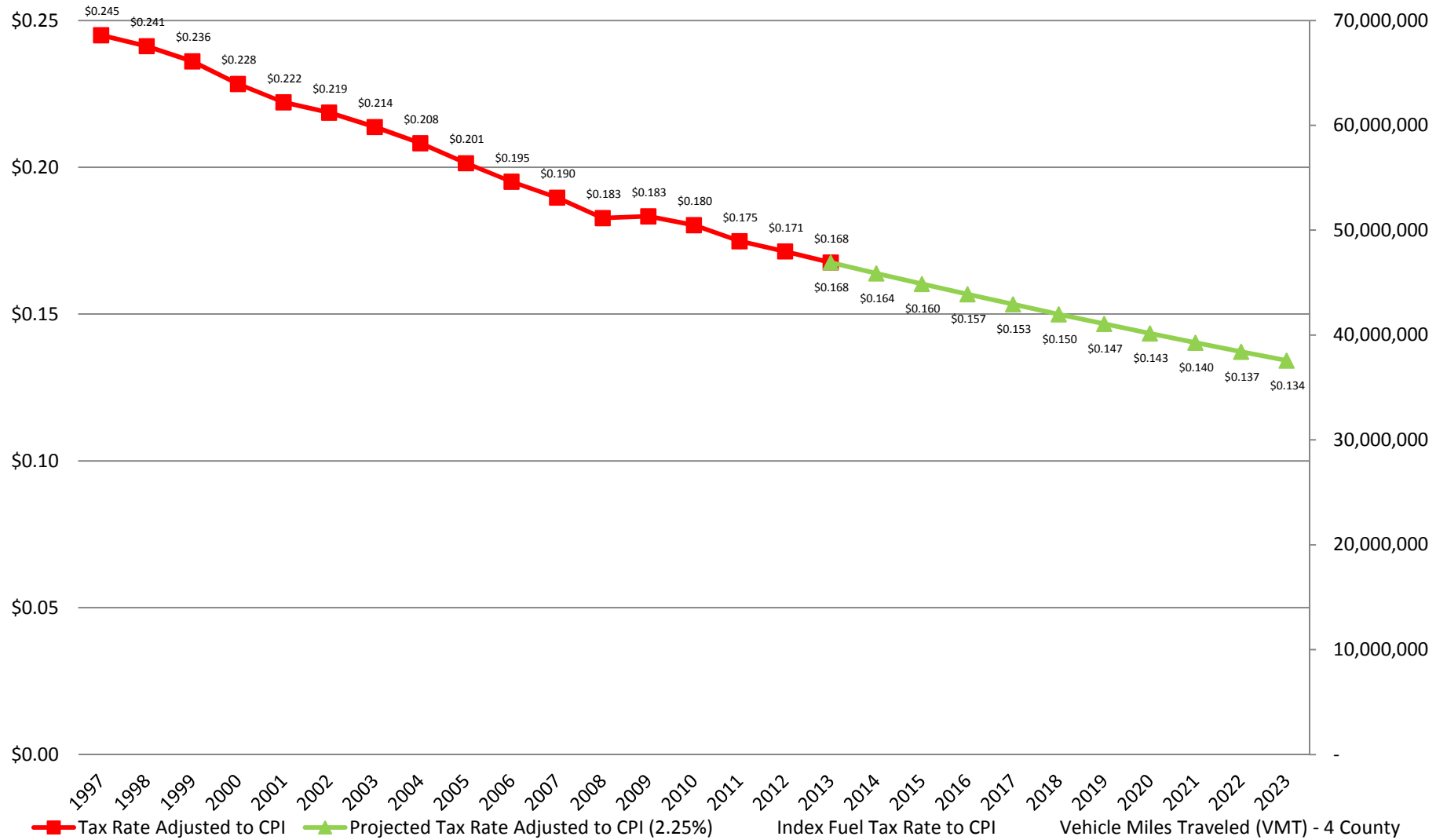


# Fuel Tax Rate Adjusted to Inflation

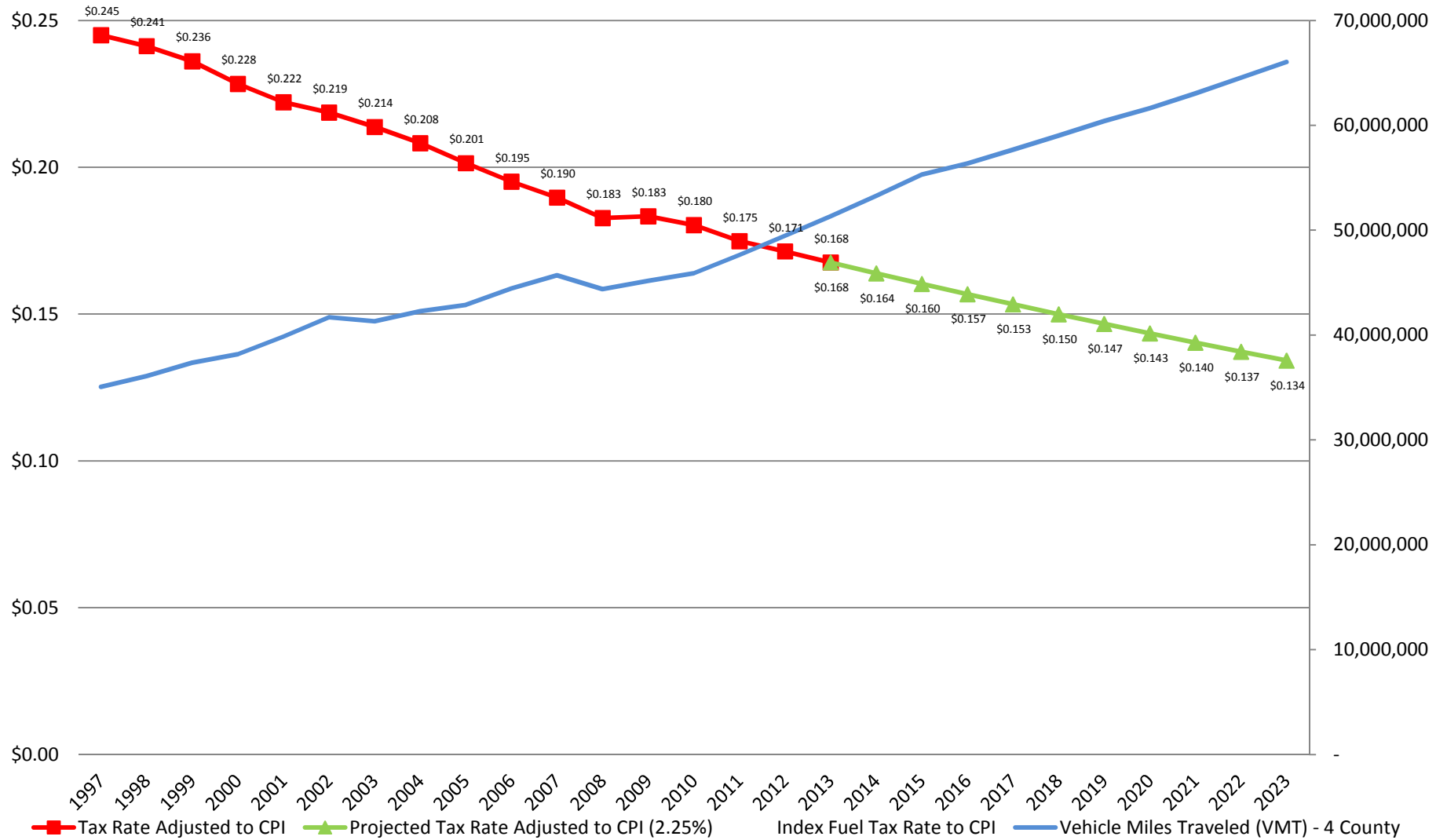


This chart does not take into account changes in vehicle efficiency or the number of gallons sold.

This chart reflects the impact of Consumer Price Index (CPI) on buying power of fuel tax. Actual construction costs typically grow at a rate higher than CPI.

Source: Bureau of Labor Statistics, calculations by Utah Foundation.

# Fuel Tax Rate Adjusted to Inflation

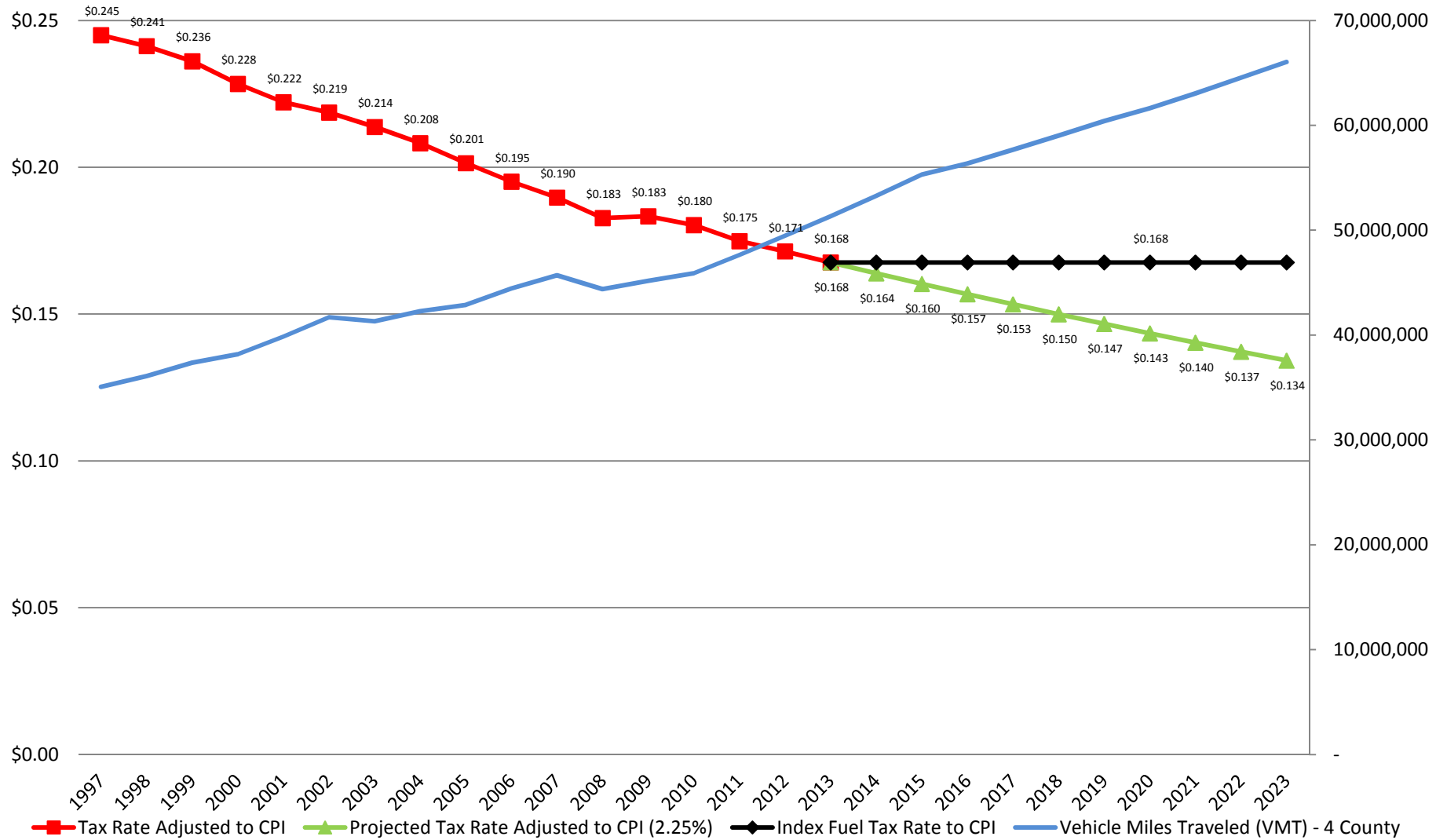


This chart does not take into account changes in vehicle efficiency or the number of gallons sold.

This chart reflects the impact of Consumer Price Index (CPI) on buying power of fuel tax. Actual construction costs typically grow at a rate higher than CPI.

Source: Bureau of Labor Statistics, calculations by Utah Foundation.

# Fuel Tax Rate Adjusted to Inflation



This chart does not take into account changes in vehicle efficiency or the number of gallons sold.

This chart reflects the impact of Consumer Price Index (CPI) on buying power of fuel tax. Actual construction costs typically grow at a rate higher than CPI.

Source: Bureau of Labor Statistics, calculations by Utah Foundation.